

# “Bolted Braced and Built”

The 21-year history of Partner Housing  
Australasia 2005 to 2026



**15 November 2004** – The Board of Habitat for Humanity Western Sydney Inc. passed a resolution initiating negotiations with HFHA.

**23 March 2005** – HFH Western Sydney and HFH Macarthur disaffiliated from HFHA  
Partner Housing Australasia was born.

- Fully volunteer - volunteers and consultants providing services on a pro-bono basis
- NO donations received for overseas projects would be spent on Australian overheads
- ALL donations made for overseas projects would be spent only on in-country labor, materials and supervision by local supervisors
- All Australian managers and consultants are volunteers, and do not receive payment
- Project overheads are only 5% of the project costs funded from existing reserves
- The organisation also opted for Board stability
- Governance role of the Board and the operational activities

# PHA is about people – Board, Managers, Volunteers, Partners, Beneficiaries



# PHA is about people – Board, Managers

- 2005** Rod Johnston, Robyn Johnston, Peter Sheldon, Rhyl Martin, Trevor Burkett, John Gow
- 2006** Rod Johnston, Robyn Johnston, Arthur Gray, Bill Ryan, Peter Sheldon, Rhyl Martin, Kath Fear, Davina Rooney
- 2007** Rod Johnston, Robyn Johnston, Arthur Gray, Bruce Hutchison, Bill Ryan, Susan Faber, Kath Fear, Davina Rooney
- 2008** Rod Johnston, Robyn Johnston, Arthur Gray, Bruce Hutchison, Bill Ryan, Susan Faber, Davina Rooney
- 2009** Rod Johnston, Robyn Johnston, Arthur Gray, Bruce Hutchison, Bill Ryan, Susan Faber, Steve Ledger
- 2010** Rod Johnston, Robyn Johnston, Arthur Gray, Bruce Hutchison, Bill Ryan, Susan Faber, Steve Ledger
- 2011** Rod Johnston, Robyn Johnston, Arthur Gray, Bruce Hutchison, Bill Ryan, Susan Faber, Steve Ledger
- 2012** Rod Johnston, Robyn Johnston, Arthur Gray, Bruce Hutchison, Bill Ryan, Susan Faber, Steve Ledger, David Kaunitz, Julianne McKay
- 2013** Rod Johnston, Robyn Johnston, Arthur Gray, Bruce Hutchison, Bill Ryan, Peter Cheers, Susan Faber, David Kaunitz, Julianne McKay
- 2014** Rod Johnston, Robyn Johnston, Arthur Gray, Bruce Hutchison, Bill Ryan, Peter Cheers, Susan Faber, David Kaunitz, Julianne McKay, Peter Sheldon, John Fielder
- 2015** Rod Johnston, Robyn Johnston, Arthur Gray, Bruce Hutchison, Bill Ryan, Peter Cheers, Susan Faber, David Kaunitz, Julianne McKay, Peter Sheldon, John Fielder, Grant Wood
- 2016** Rod Johnston, Robyn Johnston, Arthur Gray, Bruce Hutchison, Bill Ryan, Peter Cheers, David Kaunitz, Peter Sheldon, Grant Wood, Daniel Chan
- 2017** Rod Johnston, Robyn Johnston, Arthur Gray, Bruce Hutchison, Bill Ryan, Peter Cheers, David Kaunitz, Grant Wood, Daniel Chan
- 2018** Rod Johnston, Robyn Johnston, Arthur Gray, Bruce Hutchison, Bill Ryan, Peter Cheers, David Kaunitz, Ian Warren, Ian Volke, Alison Scotland, Nicola Smart, Daniel Chan
- 2019** Rod Johnston, Robyn Johnston, Arthur Gray, Bruce Hutchison, Bill Ryan, Peter Cheers, David Kaunitz, Ian Warren, Ian Volke, Alison Scotland, Nicola Smart, Jenny Turner
- 2020** Rod Johnston, Robyn Johnston, Arthur Gray, Bruce Hutchison, Bill Ryan, Peter Cheers, David Kaunitz, Ian Warren, Ian Volke, Alison Scotland, Nicola Smart, Jenny Turner
- 2021** Rod Johnston, Robyn Johnston, Arthur Gray, Bruce Hutchison, Bill Ryan, Peter Cheers, David Kaunitz, Ian Warren, Ian Volke, Alison Scotland, Nicola Smart, Jenny Turner, Evy Anwar
- 2022** Rod Johnston, Robyn Johnston, Arthur Gray, Bruce Hutchison, Peter Cheers, David Kaunitz, Ian Warren, Alison Scotland, Nicola Smart, Jenny Turner, Evy Anwar, Tia Skwarko, Ian Volke
- 2023** Rod Johnston, Robyn Johnston, Arthur Gray, Bruce Hutchison, Peter Cheers, David Kaunitz, Ian Warren, Alison Scotland, Nicola Smart, Jenny Turner, Evy Anwar, Tia Skwarko, Ian Volke
- 2024** Rod Johnston, Robyn Johnston, Arthur Gray, David Kaunitz, Alison Scotland, Nicola Smart, Jenny Turner, Ian Volke, Evy Anwar, Tia Skwarko, Ian Warren, Peter Cheers
- 2025** Rod Johnston, Robyn Johnston, Arthur Gray, David Kaunitz, Alison Scotland, Nicola Smart, Jenny Turner, Ian Volke, Evy Anwar, Tia Skwarko, Ian Warren, Peter Cheers

# 2005 – Habitat for Humanity International (Asia-Pacific)

Two two-week visits, September and December to inspect and report on tsunami construction in Thailand, Indonesia, Sri Lanka, India



Partner Housing Australasia (Building) Incorporated is a Christian ministry working with families, volunteers and donors to provide building services, financial assistance and nurture for the provision of affordable housing to those in need throughout Australia and beyond.

## Design and Construction Assessment Tsunami Reconstruction Housing Thailand, Indonesia, Sri Lanka & India

For Habitat for Humanity International (Asia – Pacific)



This report has been prepared on behalf of Partner Housing Australasia (Building) Incorporated by:

**Rod Johnston**  
B Tech, M Eng Sc, MCD,  
QP Eng, NPER, MIE Aust, RPEQ

**Quasar Management Services Pty Ltd**  
Incorporated in NSW ABN 21 003 954 210



## **2006 – 2008 PHA – Build and finance interest-free affordable houses**

In 2006 PHA commenced the financing and construction of two more interest-free houses in Cambridge Park, Western Sydney.

Previously, while trading as Habitat for Humanity Western Sydney, PHA built 14 affordable houses in Western Sydney, and provided interest-free mortgages.

While most mortgages have been successfully redeemed, in 2026 PHA still holds three un-redeemed mortgages. PHA is proud of our record as a compassion and flexible lender to families under significant financial stress.



## 2005 to 2020

**Partner Housing Charity** – PHA provided design assistance and construction labour to PHC to build and finance **five more interest-free houses** in SW Sydney. PHC was subsequently wound up, and its assets donated to PHA.



**2005 – 2006**

**Habitat for Humanity Australia** - Technical and administrative support for HFHA house at St Helens Park

**2012**

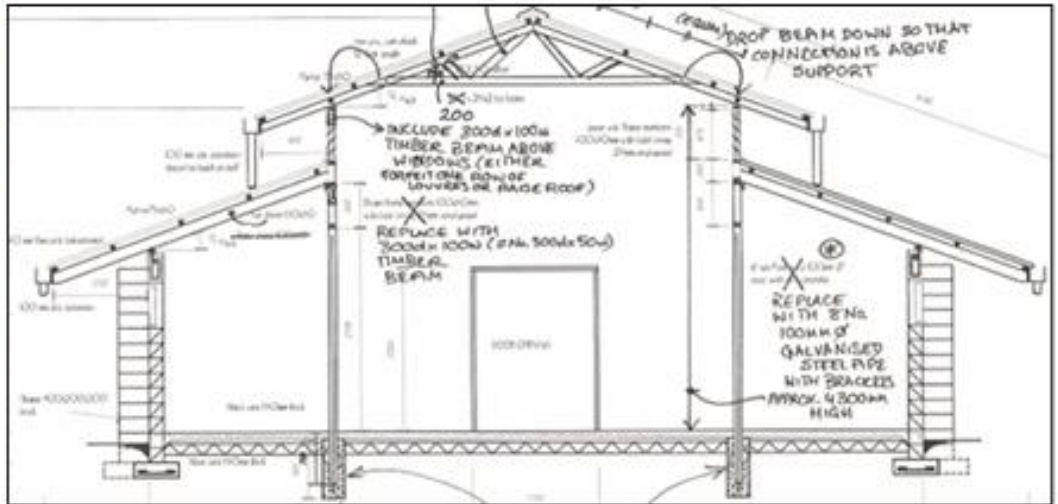
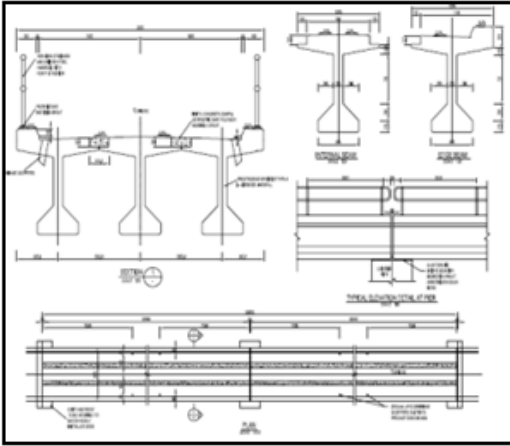
**Habitat for Humanity Australia** - Inspect and report on an HFHA house that was relocated to Narrabri



# 2006 to 2008

## Republic of Kiribati – Public Works Department

- Design two large standard copra storage sheds
- Advice on sewage outfall crossing a sensitive reef at Tabiteueu North Hospital
- Arrange for Ove Arup to design Butoa Bridge on Tarawa.



2007

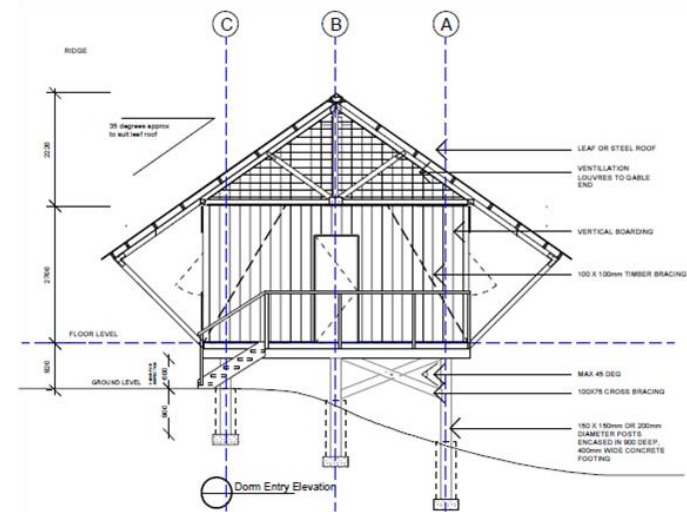
**Habitat for Humanity Australia - Earthquake and tsunami reconstruction plan for parts of Gizo**





# 2005 to 2009

Design Services for Emergency Architects Australia, Habitat for Humanity International, Divya Shanthi Designs for houses, schools and storage buildings in Timor Leste, Pakistan, India, Mongolia, Solomon Islands and Kiribati



**2009**

## **“2nd Asia-Pacific Housing Forum” in Manila, Philippines**

Networking opportunities led to two key relationships being formed

- Habitat for Humanity >> Papua New Guinea >> Vision for Homes
- Red Cross >> enhanced cyclone resistance of houses in Cook Islands

Paper presented to:

Habitat for Humanity 2<sup>nd</sup> Asia-Pacific Housing Forum - 7-9 September 2009, Manila, Philippines  
“Maximising urban poverty housing solutions for greater results”

## **Coordinated Pro-Bono Professional Services for Construction NGOs**

**Rod Johnston**

B Tech, M Eng Sc, MICD, MIE Aust, CP Eng, NPER, RPEQ  
President - Partner Housing Australasia (Building) Incorporated

### **Abstract**

Most large NGOs rarely possess the specialized skills associated with specific engineering and architectural investigation and design, which must be provided properly qualified and experienced practicing professionals. This paper describes how building professionals (engineers, architects and builders) across the Asia-Pacific region can provide coordinated pro-bono professional services to major NGOs involved in “disaster reconstruction, “disaster mitigation” and “save and build” programs.

**2009**

**Habitat for Humanity International affiliates in Papua New Guinea**

House inspections in Lae, Markham Valley and Kainantu (Eastern Highlands)

Assistance with governance issues



2010

**Vision for Homes** – PNG Mt Hagen – Inspect houses at Kuma, Moyem & Nelga, governance , policies and procedures, audit operations, develop strategy and plan funding. Establish a long-term working relationship.



# 2011

## PNG Mt Hagen – First steps towards full support for Vision for Homes

Five-year partnership with Partner Housing Australasia providing partial funding, auditing, mentoring and training to Vision for Homes. Under these arrangements, VFH completed –

- 12 private houses,
- 3 school houses,
- 2 school buildings (each 2 class rooms plus office)
- trade training courses for local building industry trainees



**2010**

**Emergency Architects Australia – Engineering support**

Aitutaki (Cook Islands) – Cyclone Pat struck damaging 277 houses (72 destroyed) Structural designs in support of EAA reconstruction proposal

Manila conference > International Red Cross

+

>>> Cook Islands Red Cross

Emergency Architects Australia > Cyclone Pat



# 2011 and 2012

## Cook Islands Red Cross and Australian Red Cross

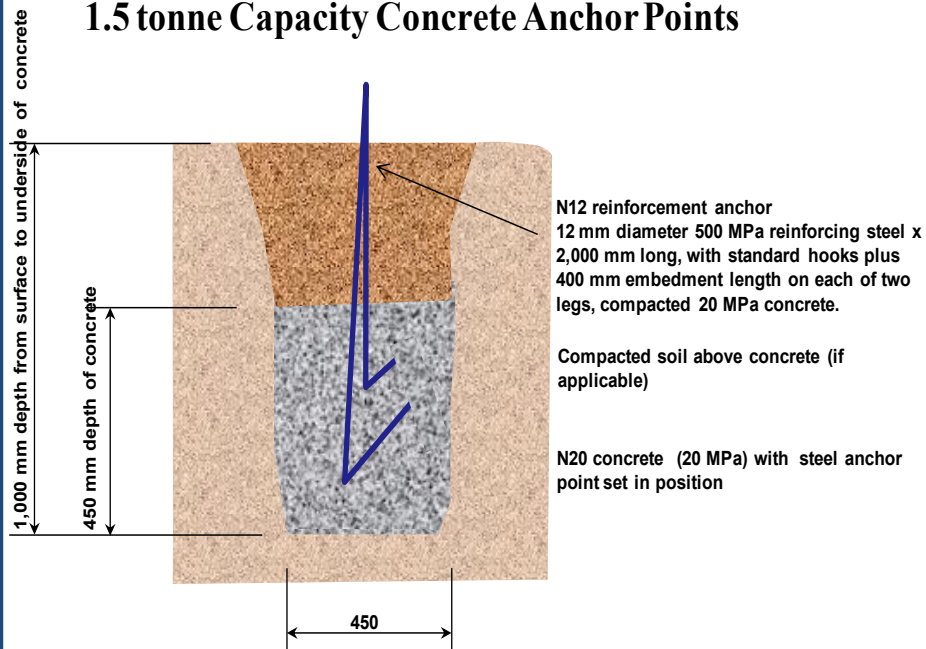
Installed anchors for 138 houses (Mangaia) and 55 houses (Mitiaro)

An independent RMIT study into the Mangaia anchorage program included the following summary:

- *The system of roof anchoring introduced in the [Partner Housing] project provided better resilience to cyclones, addressing a key vulnerable part of the house.*
- *Although the whole structure was not strengthened and only a part of the roof was made secure, it still improved the resilience of houses to some extent.*
- *Reliance on imported materials might affect sustainability and long-term resilience.*



### 1.5 tonne Capacity Concrete Anchor Points



**2012**

**Emergency Architects Australia**

Volunteer Civil Engineer joined the EAA team constructing water harvesting spring boxes in East Arwin (PNG)



**2013**

**North Ranongga Community Association**

Buri (Solomon Islands)

Supply and installation of six tanks, six standpipes and 2 km of pipelines.



# 2014

**North Ranongga Community Association – Buri and Keigold (Solomon Islands)**

Repair flood damage at Buri and design augmentation of the Keigold water scheme.

**North Ranongga Community Association – Improve water intake at Buri.**

Construct new intake, pipelines and standpipes, and repair two tanks at **Keigold**.

Fund, appoint and train part-time local water maintenance foreman



# 2014 Cyclone Responses

**Tonga** – Advice to the Deputy Prime Minister regarding reconstruction after Cyclone Ian in Ha’apai (Tonga). Despite an initial favourable response to our offer, the project did not proceed.



**Central Philippines** - 8 November 2013 - Typhoon Haiyan (known locally as Yolanda) Save Gibitngil Island Association – In Gibitngil 176 of the 396 houses destroyed or damaged. Partner Housing volunteers carried out a damage survey and formulated a reconstruction plan.



**Braced Bolted and Built**

**Rebuilding after Hurricane Haiyan**

Proud owner of a 3.0 x 3.0 m Modular "Basic Shelter" with unique cyclone resistant features – The same structure serves as a transition house and as the shear core of an extended larger house.

**2010 – 2016**

**Philippines (Save Gibitngil Island Association) – Latrines**

**Solomon Islands (Emergency Architects) – Latrines**

**Sanitation (Philippines and Solomon Islands)**



**170 + Latrines, Gibitngil, Philippines,  
2016 – present**




**110+ Latrines, Ranongga, Solomon Islands  
2010-2012**



**ARDA (Anglican Relief & Development Agency)** – A private visit to Laos by four of the Partner Housing Australasia members led to an agreement to provide building skills training material, as this is further developed for other programs.


**1.5 tonne Capacity Permanent Remote Concrete Anchor Points**

1. Excavate 450 x 450 x 1,000 deep hole.
2. Bore N12 reinforcement anchor.
3. Prepare a mold out of a 100 dia x 700 mm pipe, split down one side and held together by two rings.



**“Fishtail” Roof Anchors for Reinforced Concrete Masonry Bond Beams**

**Capacity**  
 190 mm reinforced masonry 30.7 kN  
 140 mm reinforced masonry 23.3 kN  
 Based on AS 4773.1 Table 4.2

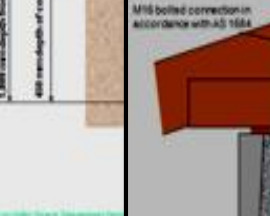


**Anchor Points with Temporary Tie Ropes**

The first step in improving cyclone resistance is to construct strong anchor points, to which the roof tie ropes can be fixed. The spacing of anchor points should not exceed 3.0 metres.


There are two types on roof ties:

1. Roof ties that prevent roofing sheets from being blown off the house once it has become loosened by the wind. These generally run end-to-end along a gable roofed house. These are the most common form of roof tie.
2. Roof ties that...

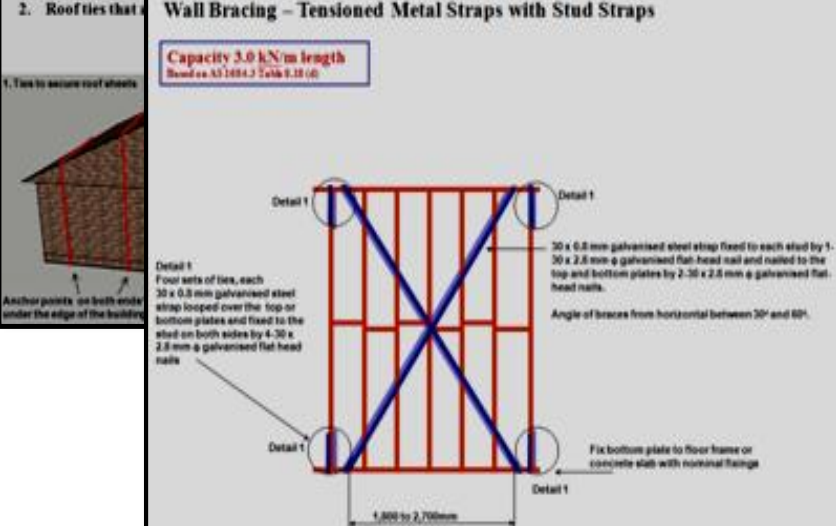


**Wall Bracing – Tensioned Metal Straps with Stud Straps**

**Capacity 3.0 kN/m length**  
 Based on AS 1684.2 Table 3.12 (d)



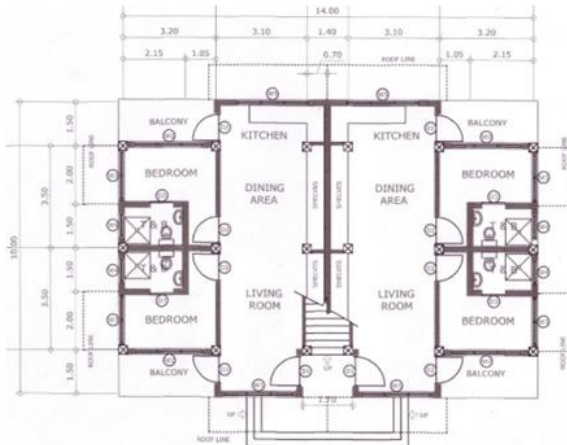
**Capacity 3.0 kN/m length**  
 Based on AS 1684.2 Table 3.12 (d)



# 2012 and 2013

Various clients and partners – Asia-Pacific Region Pro-bono professional services

- Auditing and specialist advice on building component manufacture, including activities in “timber truss and frame prefabrication”, and “concrete block manufacture”.
- Architectural and engineering design for the new Buri Community Centre.
- Don Bosco Technical Institute in Honiara (Solomon Islands) – design of a staff house and arranged for TTW to carry out a pro-bono structural assessment of the earthquake resistance of a water tower. Also provide building skills training material.



# 2014

## Livingstone School (Bangladesh)

- Partial funding and technical support for construction of three classroom and a women's refuge.
- Assist other donors to contribute.
- Develop a building trade training module.



# 2012 to 2015

## Shelter Reference Group - Professional Services Manager represents Partner Housing

- Membership application – Australian Council for International Development (ACFID)
- 2013 Shelter Reference Group Annual Conference – Technical paper

*“Resilience of Shelter - Minimum Structural Design for Cyclonic Wind, Earthquake and Tsunami Resistance”*

- Engineering manual for use by NGOs and their consulting engineers

*“Structural Resilience Policy and Details for Designing Village Housing and Infrastructure in the South-Pacific for Wind, Earthquake and Tsunami”*

**PHA PARTNER HOUSING AUSTRALASIA (Building) Incorporated**  
 ABL 88 727 429 • CPM 11407  
 PO Box 702, Port Moresby WPM 1114 Phone +61 6 6721 8888  
 Email: PartnerHousing@theaustliantelco.com.au www.pha.org.au

**Structural Resilience Policy and Details for Designing Village Housing and Infrastructure in the South-Pacific for Wind, Earthquake and Tsunami**

**Table of Contents:**

1	Introduction
2	Scope
3	References
4	General Design Principles
5	Structural Design
6	Wind
7	Earthquake
8	Tsunami
9	Other Hazards
10	Construction
11	Quality Assurance
12	Appendix A
13	Appendix B
14	Appendix C
15	Appendix D
16	Appendix E
17	Appendix F
18	Appendix G
19	Appendix H
20	Appendix I
21	Appendix J
22	Appendix K
23	Appendix L
24	Appendix M
25	Appendix N
26	Appendix O
27	Appendix P
28	Appendix Q
29	Appendix R
30	Appendix S
31	Appendix T
32	Appendix U
33	Appendix V
34	Appendix W
35	Appendix X
36	Appendix Y
37	Appendix Z
38	Appendix AA
39	Appendix AB
40	Appendix AC
41	Appendix AD
42	Appendix AE
43	Appendix AF
44	Appendix AG
45	Appendix AH
46	Appendix AI
47	Appendix AJ
48	Appendix AK
49	Appendix AL
50	Appendix AM
51	Appendix AN
52	Appendix AO
53	Appendix AP
54	Appendix AQ
55	Appendix AR
56	Appendix AS
57	Appendix AT
58	Appendix AU
59	Appendix AV
60	Appendix AW
61	Appendix AX
62	Appendix AY
63	Appendix AZ
64	Appendix BA
65	Appendix BB
66	Appendix BC
67	Appendix BD
68	Appendix BE
69	Appendix BF
70	Appendix BG
71	Appendix BH
72	Appendix BI
73	Appendix BJ
74	Appendix BK
75	Appendix BL
76	Appendix BM
77	Appendix BN
78	Appendix BO
79	Appendix BP
80	Appendix BQ
81	Appendix BR
82	Appendix BS
83	Appendix BT
84	Appendix BU
85	Appendix BV
86	Appendix BW
87	Appendix BX
88	Appendix BY
89	Appendix BZ
90	Appendix CA
91	Appendix CB
92	Appendix CC
93	Appendix CD
94	Appendix CE
95	Appendix CF
96	Appendix CG
97	Appendix CH
98	Appendix CI
99	Appendix CJ
100	Appendix CK

**Table of Wind Classifications:**

Wind Category	Description	Equation	V <sub>ref</sub> (m/s)	V <sub>ref</sub> (km/h)	R <sub>ref</sub> (kPa)
1	Zone 1: Pacific Islands adjacent to the equator: East Timor, Papua New Guinea, Solomon Islands, Indonesia, Malaysia	V <sub>ref</sub> = 30	30	68	0.30
2	Zone 2: Pacific Islands adjacent to the equator: East Timor, Papua New Guinea, Solomon Islands, Indonesia, Malaysia	V <sub>ref</sub> = 35	35	79	0.35
3	Zone 3: Pacific Islands adjacent to the equator: East Timor, Papua New Guinea, Solomon Islands, Indonesia, Malaysia	V <sub>ref</sub> = 40	40	90	0.40
4	Zone 4: Pacific Islands adjacent to the equator: East Timor, Papua New Guinea, Solomon Islands, Indonesia, Malaysia	V <sub>ref</sub> = 45	45	101	0.45
5	Zone 5: Pacific Islands adjacent to the equator: East Timor, Papua New Guinea, Solomon Islands, Indonesia, Malaysia	V <sub>ref</sub> = 50	50	112	0.50
6	Zone 6: Pacific Islands adjacent to the equator: East Timor, Papua New Guinea, Solomon Islands, Indonesia, Malaysia	V <sub>ref</sub> = 55	55	123	0.55
7	Zone 7: Pacific Islands adjacent to the equator: East Timor, Papua New Guinea, Solomon Islands, Indonesia, Malaysia	V <sub>ref</sub> = 60	60	134	0.60
8	Zone 8: Pacific Islands adjacent to the equator: East Timor, Papua New Guinea, Solomon Islands, Indonesia, Malaysia	V <sub>ref</sub> = 65	65	145	0.65
9	Zone 9: Pacific Islands adjacent to the equator: East Timor, Papua New Guinea, Solomon Islands, Indonesia, Malaysia	V <sub>ref</sub> = 70	70	156	0.70
10	Zone 10: Pacific Islands adjacent to the equator: East Timor, Papua New Guinea, Solomon Islands, Indonesia, Malaysia	V <sub>ref</sub> = 75	75	167	0.75
11	Zone 11: Pacific Islands adjacent to the equator: East Timor, Papua New Guinea, Solomon Islands, Indonesia, Malaysia	V <sub>ref</sub> = 80	80	178	0.80
12	Zone 12: Pacific Islands adjacent to the equator: East Timor, Papua New Guinea, Solomon Islands, Indonesia, Malaysia	V <sub>ref</sub> = 85	85	189	0.85
13	Zone 13: Pacific Islands adjacent to the equator: East Timor, Papua New Guinea, Solomon Islands, Indonesia, Malaysia	V <sub>ref</sub> = 90	90	200	0.90
14	Zone 14: Pacific Islands adjacent to the equator: East Timor, Papua New Guinea, Solomon Islands, Indonesia, Malaysia	V <sub>ref</sub> = 95	95	211	0.95
15	Zone 15: Pacific Islands adjacent to the equator: East Timor, Papua New Guinea, Solomon Islands, Indonesia, Malaysia	V <sub>ref</sub> = 100	100	222	1.00

**Map of Papua New Guinea:** Shows the location of various Pacific Islands and the typical building design.

**Technical Diagrams:** Illustrations of building structures, including a typical building and a masonry building.

**Text Sections:** Detailed descriptions of building requirements, including wind, earthquake, and tsunami resistance.

# 2015 >>>> A Turning Point in the PNG Program

## Kalolo Clinic

*“.... If prefabrication is to be undertaken in Mt Hagen, then Kelly [Vision for Homes Manager] will require a technically skilled member of PHAB [Partner Housing] to assist in establishing this ..... Without on-the-ground support from PHAB [Partner Housing], Kelly [is] not confident to initiate prefabrication on such a strategically important project.” Julienne McKay*



# 2016

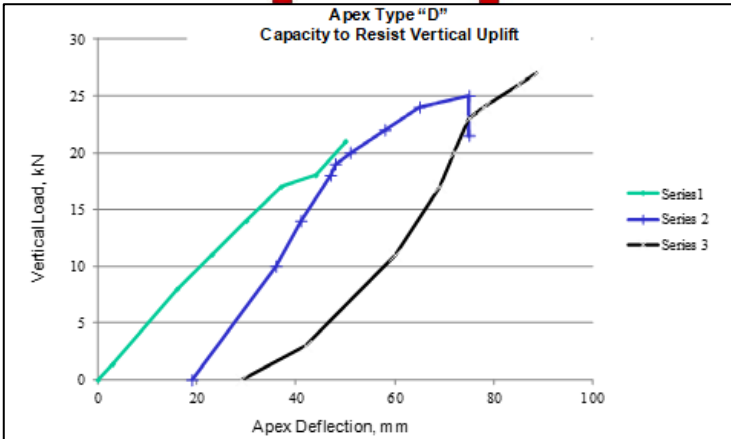
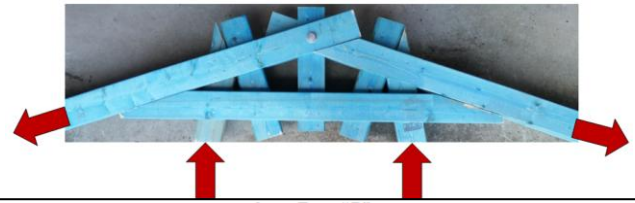
Solomon Islands – Further village water-supply and maintenance.

PNG – The **DANCER Building System** was designed and tested in Australia during 2016 and 2017, and subsequently used in PNG for the community health and education building and housing program. Several full scale prototype trusses were tested at the property of Chris Broadbridge. Small Scale Tests at Mahaffey Associates were carried out by David Wilmsurst on several alternative configurations of ridge connection.



Exploded View of the Typical Apex of Trusses 90-1, 90-2, 90-3 Before Assembly

Two Test Trusses Pushed Up By Loading Truss



**2017**

**PNG - Five Police Houses** constructed using the Partner Housing DANCER Building System at Baiyer River for the Government of Papua New Guinea.



# 2018

**PNG – Probono engineering assessments of 58 damaged schools, clinics, houses and churches for the Papua New Guinea Catholic Diocese of Mendi after the devastating February 2018 magnitude 7.5 earthquake.**

## **PNG – Mt Hagen Training Centre**



Mt Hagen Training Centre & Accommodation, 2018

2019

**Solomon Islands** – New water tanks arriving at Buri on Ranongga Island in Western Solomon Islands. Improved water reticulation is being constructed by the people of Ranongga in partnership with Partner Housing, funded by an Australian Government DFAT Friendship Grant.

Fig. 9. Ranongga, showing regions and major villages



# 2020

**Solomon Islands Water** – Water supplies on Ranongga Island (at Kongu, Buri, Obobulu and Keigold) and installed two water schemes in Vella Lavella Island (in Sambora).

**PNG** – Umi Community Health Building

**Vanuatu Freshwin Project Design**



Umi Community Health Building, Dei District, Papua New Guinea Highlands, constructed during 2020 for Western Highlands Health Services Design and funding by Partner Housing (with generous individual donations), Construction by Vision for Homes (PNG)

**2021**

**Solomon Islands Water reticulation at  
Giloe and Buri school**



**PNG Kopeng Community Health  
Building**



**2022**

**Solomon Islands** – Funding support and governance assistance to the SRCA for UNICEF, to provide sanitation training in the Solomon Islands Western Province.

**Philippines** – Funding for latrines.

**PNG** – House & training centre in Port Moresby



**2023**

**PNG Kenembo School Double Two Classrooms & Office**

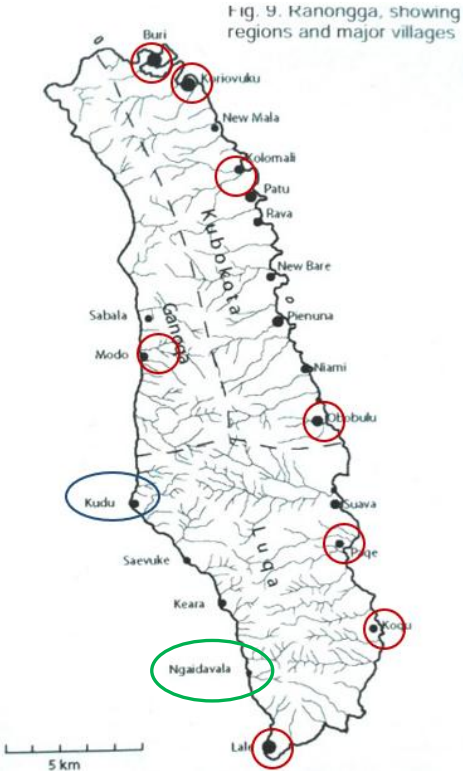




2025

**PNG –Kitip School Duplex Staff Houses No 1 and 2**

**Solomon Islands – Ngaidavala Village Water Supply**



**PNG Kitip School Duplex Staff Houses No 1**



**PNG Kitip School Duplex Staff Houses No 2**

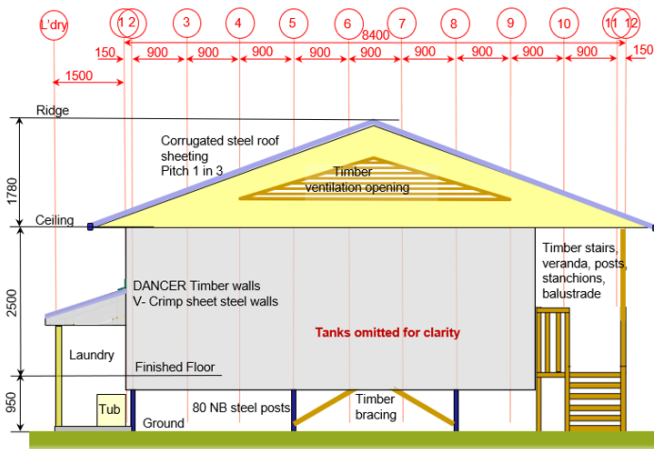
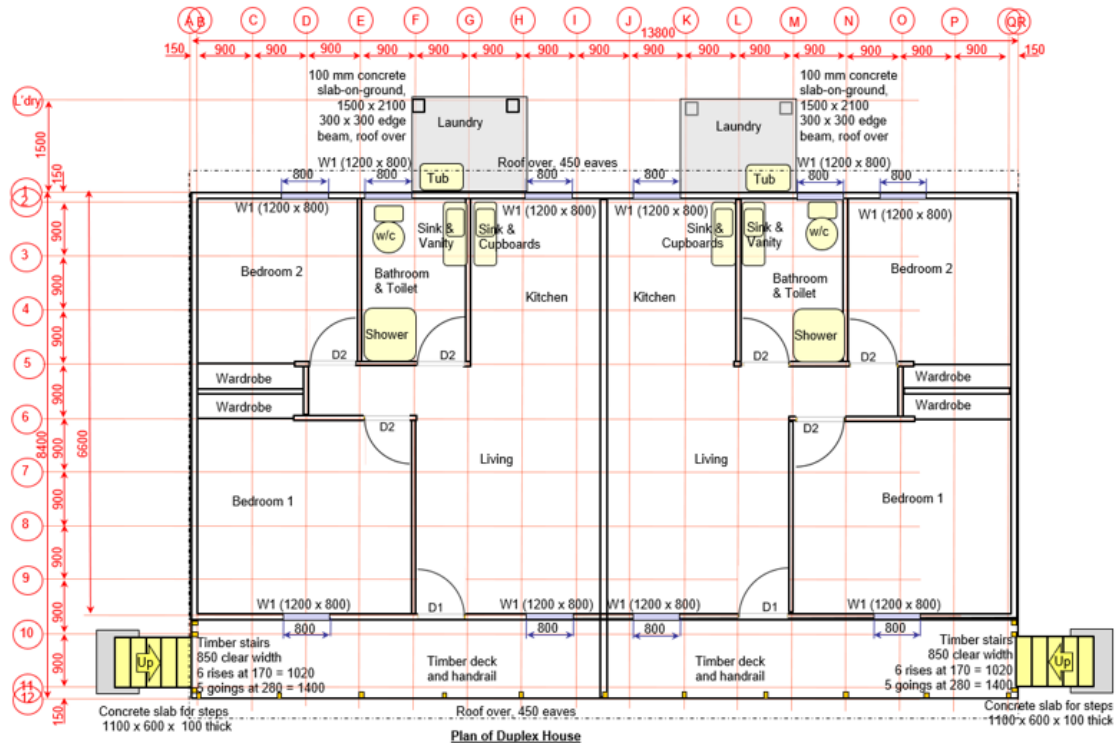


**Ngaidavala Village Water Supply –**  
**Photo before project commencement.**  
**Photos of completed project are not yet available.**

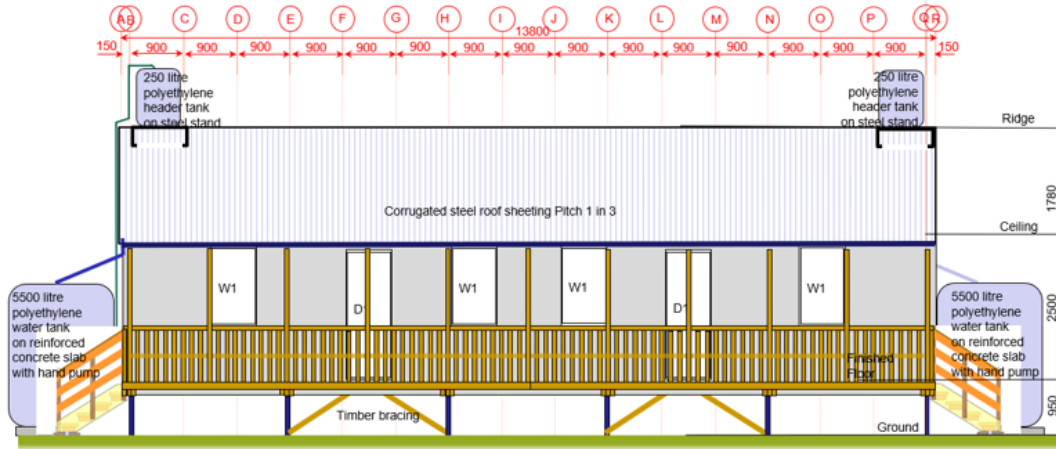
2026

# PNG Kenembo School Duplex Staff House No 1

Scheduled for  
completion June 2026



Left End Elevation

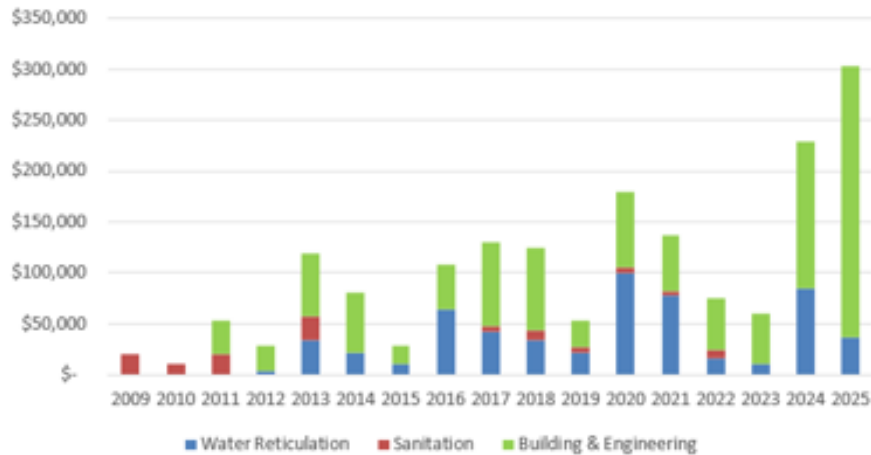


Front Elevation

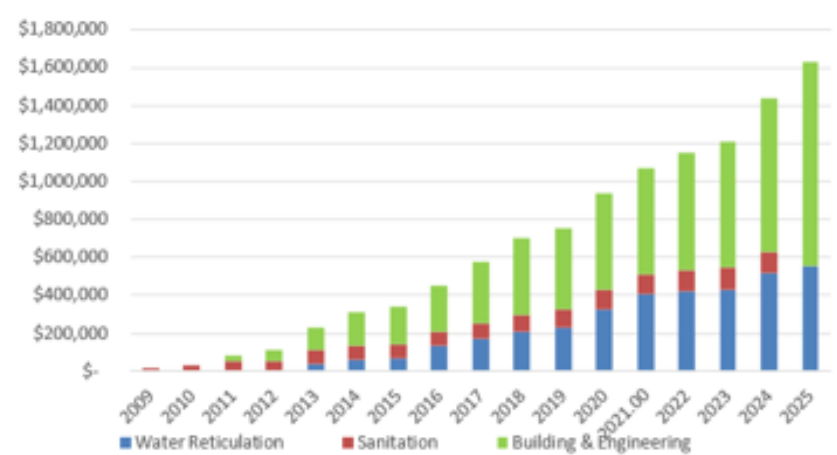
# 2025

## The International Track Record

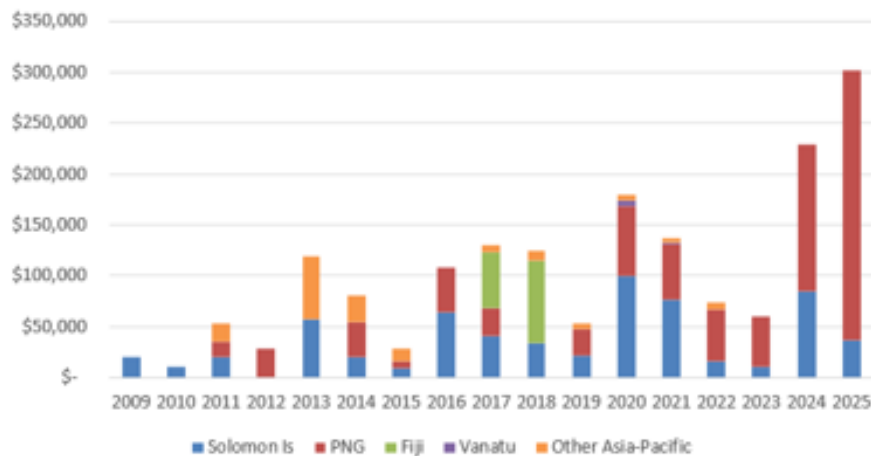
### Annual Financial Support by Program Type



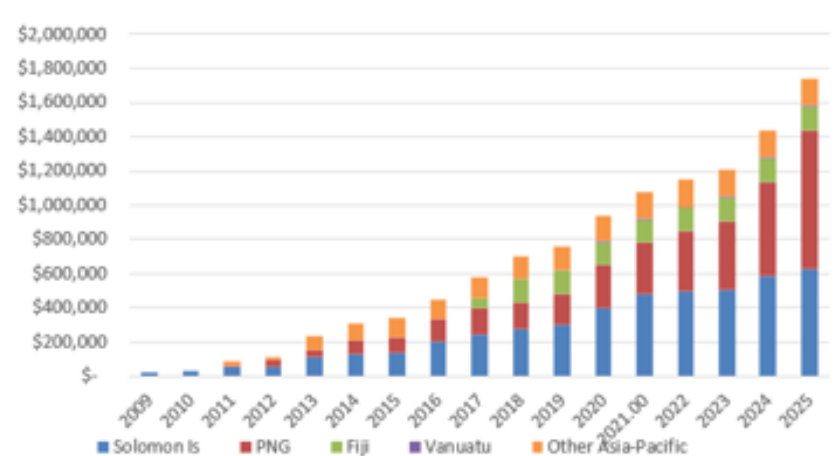
### Cumulative Financial Support by Program Type



### Annual Financial Support by Country



### Cumulative Financial Support by Country



**2025**

## **5-Year Operating Plan and Financial Plan**

The “5-year Operating Plan and Financial Plan is a conservative estimate of a worst-case scenario, in which a pilot fundraising program costing \$ 5,000 operates, but (conservatively) the plan does not include donations received as a result of that fundraising program.

Any such donations would permit the extension of the programs above the levels indicated in the table.

A donation of \$ 130,000 in 2025-2026 (for purposes of funding the PNG Kenembo School Duplex No 1) is included, together with the corresponding expenditure.

<b>Partner Housing Australasia Financial Plan</b>	<b>Assumptions: Fundraising AUD 5,000; Donation AUD 130,000</b>				
<b>Year ending 30 June</b>	<b>2026</b>	<b>2027</b>	<b>2028</b>	<b>2029</b>	<b>2030</b>
<b>PNG</b> program expenditure	\$ 133,501	\$ 10,001	\$ 10,001	\$ 10,001	\$ 10,001
<b>Solomon Is</b> program expenditure	\$ 27,001	\$ 10,001	\$ 10,001	\$ 10,001	\$ 10,001
<b>Training</b> program expenditure	\$ 3,000	\$ 3,000	\$ 3,000	\$ 3,000	\$ 3,000
<b>Fundraising</b> expenditure	\$ 5,000	\$ -	\$ -	\$ -	\$ -
<b>Other</b> program expenditure	\$ -	\$ -	\$ -	\$ -	\$ -
<b>PNG</b> fund raising income	\$ 130,000	\$ -	\$ -	\$ -	\$ -
<b>Solomon Is</b> fund raising income	\$ -	\$ -	\$ -	\$ -	\$ -
<b>Training</b> fund raising income	\$ -	\$ -	\$ -	\$ -	\$ -
<b>Donation from QMS</b>	\$ 602	\$ 602	\$ 602	\$ 602	\$ 602
<b>Opening Balance</b>	\$ 214,844	\$ 162,495	\$ 133,921	\$ 104,427	\$ 75,111
<b>Closing Balance</b>	\$ 162,495	\$ 133,921	\$ 104,427	\$ 75,111	\$ 44,682
<b>Cash available</b>	\$ 32,452	\$ 28,315	\$ 25,459	\$ 14,278	\$ 2,016

**The future – We may be small, but we are fast and effective.**

